

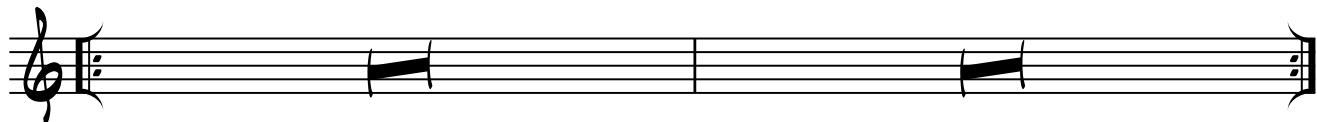
LUPO

MUSICA DI ALBERTO MANDARINI

OPEN IMPROVISATION

B^b SUS4

B^b PHRYGIAN



(ON CUE: MEDIUM ♩ = 66/72)

B^b ADD2

F

B^b ADD2

E^b MAJ7/G

F

B^b ADD2



3

G MIN ADD2

F ADD2

E^b ADD#11 E^b

¹ E^b MAJ7/G

F

B^b ADD2



7

² E^b MAJ7/G

F

B^b ADD2

C# 9 SUS

B ADD2

C# ADD2



11

F# ADD2

D# MIN 11

G# MIN 11

C# ADD2

F# ADD2



14

A7/E

A 9 SUS


D ADD2

D MAJ7/C#



16

B^{MIN7} B^{MIN7/A} G/B A^{7sus4/B} A^{9sus4} F^{9sus4}



18

Detailed description: This musical staff covers measures 18, 19, and 20. It begins with a treble clef and a key signature of two sharps (F# and C#). The melody consists of eighth and quarter notes. Above the staff, the following chords are indicated: B^{MIN7} B^{MIN7/A} G/B A^{7sus4/B} A^{9sus4} F^{9sus4}. The staff ends with a double bar line and a repeat sign.


B^bADD2 F B^bADD2 E^bMAJ7/G F B^bADD2



21

Detailed description: This musical staff covers measures 21 and 22. It begins with a treble clef and a key signature of two flats (Bb and Eb). The melody consists of quarter and eighth notes. Above the staff, the following chords are indicated: B^bADD2 F B^bADD2 E^bMAJ7/G F B^bADD2. The staff ends with a double bar line.

G^{MIN}ADD2 F^{ADD2} E^bADD#11 E^b E^bMAJ7/G F B^bADD2



25

Detailed description: This musical staff covers measures 23 and 24. It begins with a treble clef and a key signature of two flats (Bb and Eb). The melody consists of quarter and eighth notes. Above the staff, the following chords are indicated: G^{MIN}ADD2 F^{ADD2} E^bADD#11 E^b E^bMAJ7/G F B^bADD2. The staff ends with a double bar line.